



LC-DMX-D4-01

# RF RGB CONTROLLER

## Features

Applied to 12V/24V RGB strips/lamps, three in one controller of DMX decoder, DMX controller, infrared controller. Use Infrared remote controller to choose colour, mode and dim.

- cost effective comparing normal RF DMX controller
- compact size helps connecting small LED RGB lights
- professional code address settings in an easy way

## Electrical specifications

Input voltage: DC 12V/24V

Max output power: 216W/432W

Control distance: 9m (face to the infrared receiver)

Output channel: Three-way constant PWM signal output

Signal channel: one-way DMX signal input/output

Remote controller standby time: 1 year

Infrared extension cable length: 1.2m

Controller weight: 102g

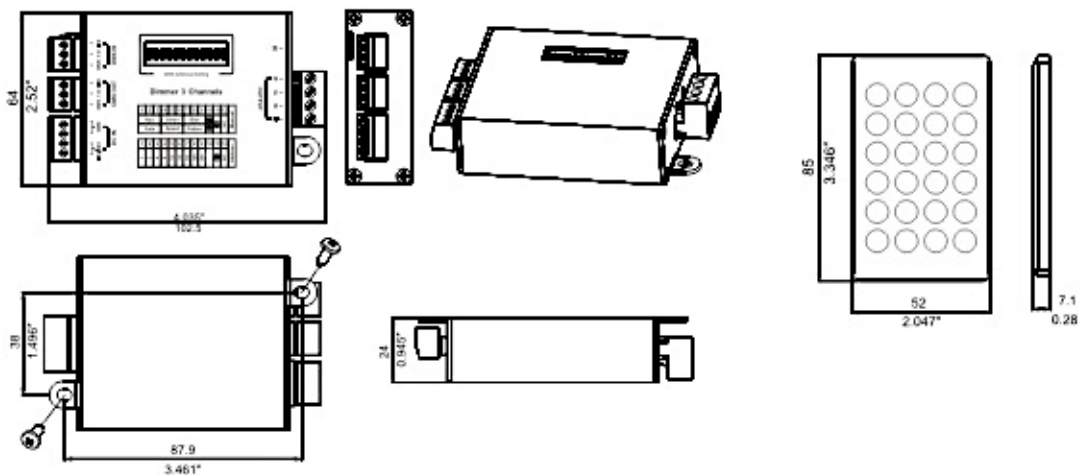
Controller product weight: 173g

## Packaging includes:

- controller,
- infrared remote control,
- infrared extension cable,
- screwdriver, a manual

## Notes:

1. Use DC 12V/24V power supply for the controller, do not use direct with the civilian high-voltage power supply.
  2. DMX Address Setting Table
- Input power does not exceed the maximum input power.





IL-CONT-RGB-216-1

# RF RGB CONTROLLER

216W LED Light with Wireless Touching RGB Controller (12V-15V). Effective receiving distance nearby 30m, Easy operation, many colors changing. Indicator keep step with RGB color changing. Input DC 12V or 24V is optional according to LED product. Maximum

output is 216W environment friendly.

## Features

- New and high quality
- Low power consumption and energy-saving
- Low voltage, no flicker, no glare
- No pollution, no UV, infrared and thermal radiation
- It has a long lifespan
- Easy to install
- Seismic, impact resistance, non-thermal radiation, safe and stable, reliable
- High brightness
- Comes with RGB controller, you can adjust the brightness and speed, multi-color

## Specifications

Key Features

LED light bulbs

Input Voltage 12-24V

Output power 216W

Frequency 433MHz

Dimension

3.46" x 2.68" x 0.98" (L x W x H)

Weight

7.12 oz

## Package Includes

- 1 x 216W LED Light with Wireless Touching RGB Controller (12V-15V)





IL-CONT-RGB-216-3

# RF RGB CONTROLLER

216W LED Light with Wireless Touching RGB Controller (12V-15V). Effective receiving distance nearby 30m, Easy operation, many colors changing. Indicator keep step with RGB color changing. Input DC 12V or 24V is optional according to LED product.

Maximum output is 216W environment friendly.

## Features

- New and high quality
- Low power consumption and energy-saving
- Low voltage, no flicker, no glare
- No pollution, no UV, infrared and thermal radiation
- It has a long lifespan
- Easy to install
- Seismic, impact resistance, non-thermal radiation, safe and stable, reliable
- High brightness
- Comes with RGB controller, you can adjust the brightness and speed, multi-color



## Specifications

Key Features

LED light bulbs

Input Voltage 12-24V

Output power 216W

Frequency 433MHz

Requires 3 AAA Batteries

Dimension

3.46" x 2.68" x 0.98" (L x W x H)

Weight

7.12 oz

## Package Includes

- 1 x 216W LED Light with Wireless Touching RGB Controller (12V-15V)

28-Key RF LED controller is a RGB wireless remote LED controller. This LED controller is designed for LED strip light and other LED products.

RF controller adopts the advanced micro control unit, it is used for controlling a variety of lamp whose source of light is LED. For instance, point source of light, flexible light strip, wall washer lamp, glass curtain wall light and so on; At the same time, it has many advantages such as convenient connection, simplicity to use and others. According to the actual need of customers, it can carry out jumpy changing, gradual changing and other effects of change



#### Technical parameters

1. Working temperature: -20-60 celsius degrees
2. Supply voltage: DC 12~24V
3. Output: 3 channels
4. Connecting mode: Common anode
5. Transmission/Receiving frequency: 433 MHz
6. External dimension: L127\*W65\*H24mm
7. Packing size: L137\*W78\*H57mm
8. Net weight: 190g
9. Gross weight: 204.5g
10. Static power consumption: <1 W
11. Output current: <4 A (each channel)
12. Output power: 12V: <144W, 24V: <288W

Brightness +( 8 in all )	Brightness-(8 in all )	Off	On
Static red	Static green	Static blue	Static white
Static Yellow	Static cyan	Static purple	3 base color jumpy
Add brightness for red	Add brightness for green	Add brightness for blue	7 colors jumpy
Reduce brightness for red	Reduce brightness for green	Reduce brightness for blue	3 base colors fade change
DIY1	DIY 2	DIY 3	7 colors fade change
DIY4	DIY5	DIY jumpy change	Spark



IL-CONT-RGB-216-5

# RF RGB CONTROLLER

The DN-RGB001RF RGB wireless remote touch controller is one of the most dynamic devices. Having a 3 channels RGB plus a single channel for dimming a single color ledstrip and/or any other device.

It has the most advanced PWM (pulse width modulation) control technology, can control all three-wire circuit (common anode) LED full color lighting products, plus another single independent white light output control.

RF remote control technology reaches up to 30 meters indoor and 50 meters outdoor(without obstacles).

It has DIP switches for setting frequency enabling this device to work as one-to-one and one-to-many remote control.



## Specifications

- ◆ Input power: DC12V-24V
- ◆ Maximum load current: 5A / Road \* 4-way
- ◆ Max load power: 240W/480W (12V/24V)
- ◆ gray levels: RGB 256
- ◆ remote with off: 50 meters indoor 30-meter outdoor
- ◆ Operating temperature: -30 °C -55 °C
- ◆ Product size:
  - remote control L112mm \* W56mm \* H21mm;
  - control box L108mm \* W69mm \* H28mm
- ◆ Weight (net): Remote Control 68g; control box 90g

## Features

- ◆ touch button control and RF wireless remote control, the indoor 30-meter outdoor 50 meters
- ◆ DC12V-24V operating voltage range of LED lamps
- ◆ ON / OFF switch controller function automatically adapts to support delay-off function
- ◆ independent single-channel white LED switch The three-channel and four dimming function
- ◆ RGB full color control and single-channel independent control output, the maximum output per Color is 5A
- ◆ color gradient change mode, the highest grayscale RGB 256
- ◆ independently choose the rate of change of the mode of each change and adjust the brightness
- ◆ shutdown memory function, each time for the brightness and color of the last shutdown



See Operation Video at : <http://www.youtube.com/watch?v=GVDN5pCnBfE>





IL-CONT-RGB-180-RF

# RF RGB CONTROLLER

The amplifier is used CMOS technology.NMOS open-drain output .Can drive LED strip, high power LED modules and all kinds of LED lamps.High output impedance with the load capacity, output current.

Simple structure, elegant appearance, DC power supply, with single remote control, easy to use. All of our material is suitable for the environment request, no any harmful heavy mercury.

## Technical parameters

1. Working temperature: -20-60 celsius degrees
2. Supply voltage: DC 12~24V
3. Output: 3 channels
4. Brightness Levels : 32
5. Speed Adjustment : 32 levels
6. Connecting mode: Common anode
7. Maximum distance : 50 m
8. Transmission/Receiving frequency: 433 MHz
9. External dimension: L127\*W65\*H24mm
10. Packing size: L137\*W78\*H57mm
11. Net weight: 190g
12. Gross weight: 204.5g
13. Static power consumption: <1 W
14. Output current: <5 A (each channel)
15. Output power: 12V: <180W, 24V: <360W



LED controller is a RGB wireless remote LED controller. This LED controller is designed for LED strip light and other LED products.

RF controller adopts the advanced micro control unit, it is used for controlling a variety of lamp whose source of light is LED. For instance, point source of light, flexible light strip, wall washer lamp, glass curtain wall light and so on; At the same time, it has many advantages such as convenient connection, simplicity to use and others. According to the actual need of customers, it can carry out jumpy changing, gradual changing and other effects of change

#### Technical parameters

1. Working temperature: -20-60 celsius degrees
2. Supply voltage: DC 12~24V
3. Output: 3 channels
4. Connecting mode: Common anode
5. Sequence of Colors : 11
6. Speed Adjustment : 32 levels
7. External dimension: L127\*W65\*H24mm
8. Packing size: L137\*W78\*H57mm
9. Net weight: 190g
10. Gross weight: 204.5g
11. Static power consumption: <1 W
12. Output current: <4 A (each channel)
13. Output power: 12V: <144W, 24V: <288W
14. Maximum Distance : 10 m



LED controller is a RGB wireless remote LED controller. This LED controller is designed for LED strip light and other LED products.

RF controller adopts the advanced micro control unit, it is used for controlling a variety of lamp whose source of light is LED. For instance, point source of light, flexible light strip, wall washer lamp, glass curtain wall light and so on; At the same time, it has many advantages such as convenient connection, simplicity to use and others. According to the actual need of customers, it can carry out jumpy changing, gradual changing and other effects of change

#### Technical parameters

1. Working temperature: -20-60 celsius degrees
2. Supply voltage: DC 12~24V
3. Output: 3 channels
4. Connecting mode: Common anode
5. Sequence of Colors : 31
6. Speed Adjustment : 8 levels
7. External dimension: L127\*W65\*H24mm
8. Packing size: L137\*W78\*H57mm
9. Net weight: 190g
10. Gross weight: 204.5g
11. Static power consumption: <1 W
12. Output current: <3 A (each channel)
13. Output power: 12V: <108W, 24V: <216W
14. Maximum Distance : 10 m







The USB DMX interface is designed for taking the place of traditional DMX console, using computer to control the DMX device so that it would be more convenient for DMX operating and programming.

### Features

- a. Conforming to DMX-512/1990 international standard protocol, 512 channels
- b. Small sized, portable
- c. XLR connector for outputting DMX 512 signal
- d. 64M internal memory
- e. Support 4G SD card at the maximum
- f. Download demo from computer to controller
- g. Easy programming, suitable to control LED lamps
- h. Connected to laptop through the USB, convenient for on-site debugging.
- i. Supporting off-line operation, man-machine conversation interface is friendly under off-line operation, colored LCD screen, touching operation.



### Electrical features

- a. USB Power supply
- b. Using 12V DC power supply in offline state
- c. Working current  $\leq 150\text{mA}$

### Accessories

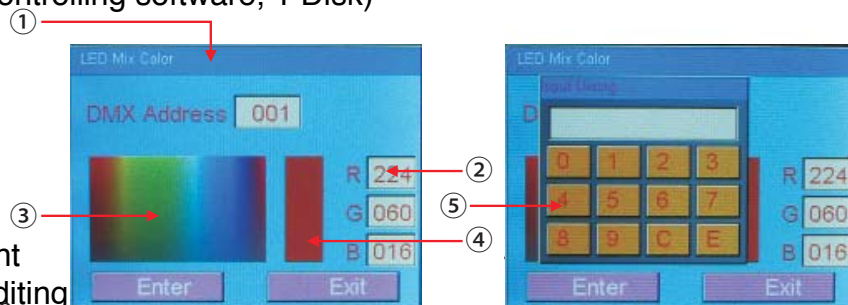
- (1) Adapter
- (2) USB Connecting Cord
- (3) DMX Virtual Controller (Intelligent light controlling software, 1 Disk)
- User Manual (please download )



Fig.2.1

### I. USB DMX Interface Operation Instruction

- 1. Description and Accessories
- 2. Standby Interface Illustration
- 3. RGB Mix Color Mode
- 4. DMX 512 Single Channel Data Adjustment
- 5. DMX Data Timing Output and Shading Editing
- 6. Internal Memory
- 7. SD/MMC Card
- 8. Controller Setting
- 9. Date & Time Adjustment



### II. USB DMX Interface Software Operation Instruction

- 10.1. Lowest Computer Configuration
- 11.2. Software Installation Wizard
- 12.3. Main Interface
- 13.4. Demo Editing Interface Illustration
- 14.5. Device Editing Interface Illustration
- 15.6. Add a DMX Decode Device
- 16.7. Add Demo





## Summary

LED-WiFi controller is surpassing the next stage over the traditional infrared and RF technology foundation by integrating lighting technology control to our gaskets including iPhone, Ipad, iTouch and Android. Now we can control our lighting devices from our phone through a WIFI direct connection at home, including color, effects and bright. We can use one of the may programmed effects or we can create ours and store it in our iphone ,Android or iPad device

It makes the LED control more human friendly. We can use an Android based device or IOS system. If our choice is Apple, then the software can be downladed from te Apple Store.

By using WiFi technology can have a longer range, can get rid of narrow space constraint, inside buildings, range is over than 50m. Outdoor range is over 100m.



### Technical parameters

- 1:Working voltage: DC5--24V
- 2:Output control: 3 channel, 2 channel, 1 channel LED lamps.
- 3:Output current: 4A\*3
- 4:Connect mode: common anode
- 5:External dimension: L107\*W65\*H30(mm )
6. Channel : DMX

We have 3 models available.

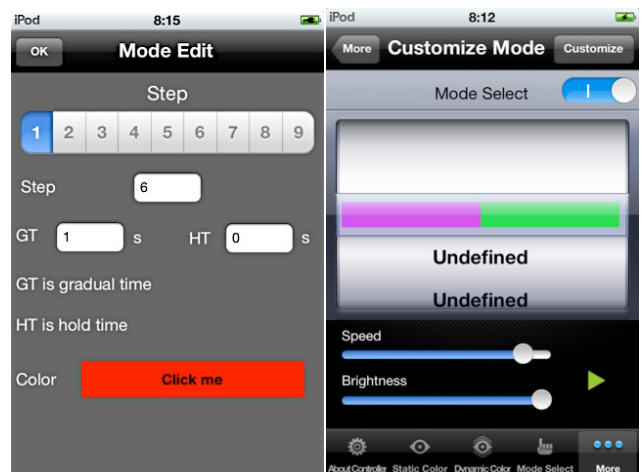
1. For digital ledstrips
2. For luminaires
3. For single color ledstrips



Videos del Control Iphone

<http://www.youtube.com/user/corporacionledmx>

- [Using a Digital Ledstrip](#)
- [Using Luminaires](#)
- [Iphone Screen](#)



### Summary

The DMX controller adopts the advanced micro control unit , it is used for controlling a variety of RGB lamps whose source of light is LED converting DMX-512 signals to Output RGB Signal. Useful to provide the full features of a full DMX solution at an RGB price.

### 3 Channels (1 RGB device)

- Working temperature: -20-60degree
- Brightness : 16 levels
- Remote Control : IR
- Max Distance : 10 m
- Interfase : DMX-512, Jack RJ45



Features	CTL-DMX-4500	CTL-DMX-4300	CTL-DMX-4600
Channels	3	3	3
Current / Channel	5 Amp	3 Amp	6 Amp
Power	180 W	108 W / 216 W	216 W / 432 W
Voltage	12 VDC	12 VDC/24 VDC	12 VDC/24 VDC
Remote Control	Yes	No	No

### 24 Channels (8 RGB devices). (Code : IL-RGB-SWITCH-24)

- Working temperature: -20-60degree
- Supply voltage: 12V, 24V
- Output: 24 channels
- Brightness : 256 levels
- Remote Control : IR
- Max Distance : 10 m
- Output Voltage : 12 VDC / 24 VDC
- Current : 3 Amp per channel
- Power < 864 W
- Interfase : DMX-512, Jack RJ45 y XLR-3

